

# Electro-Mechanical Actuator

Ball-screw Type

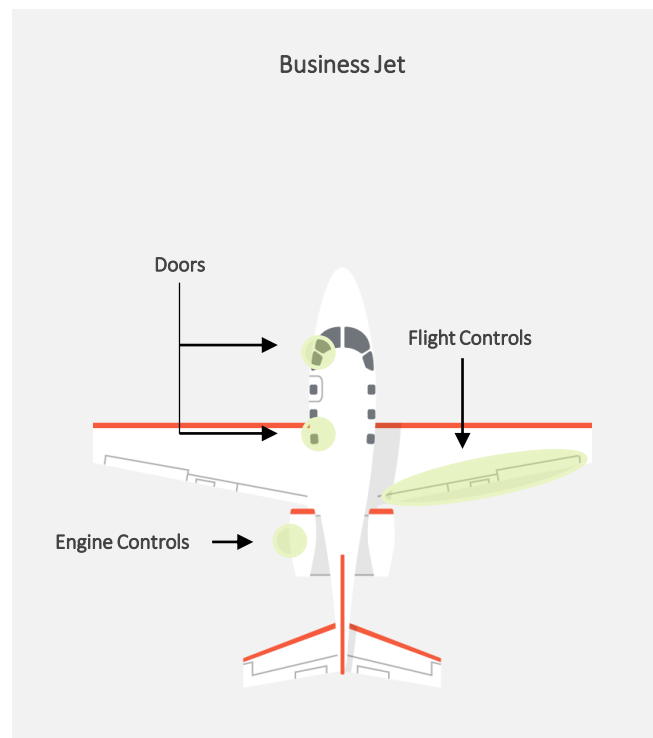
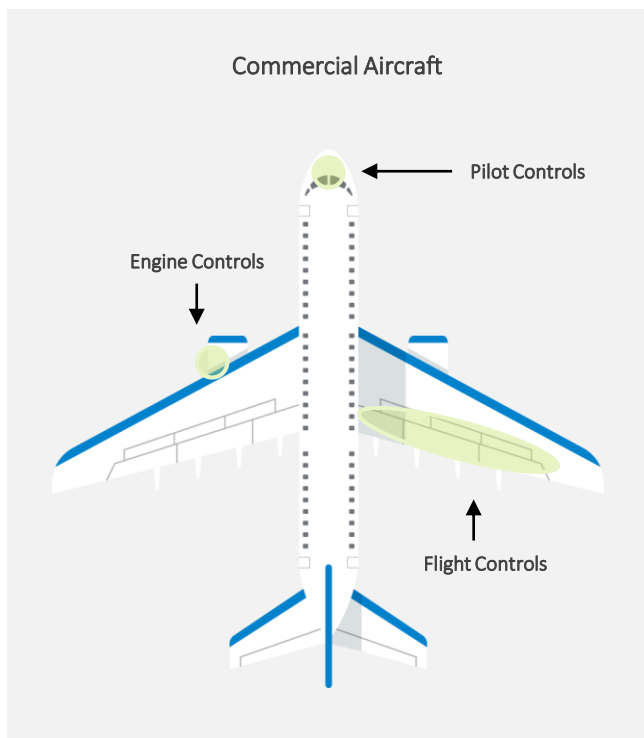
## Description

TAMAGAWA SEIKI provides wide variety of electric linear actuators with ball screw. By customization of fitting & electrical specification, we design and produce to meet customer's requirement for stroke, operating force and speed. Stroke is up to 300 mm (12 inches), operating force is up to 20,000 N (4,500 lbs) and operating speed is up to 1 inch/sec with high efficient power transmission. Both of irreversibility and reversibility are available.



## Applications

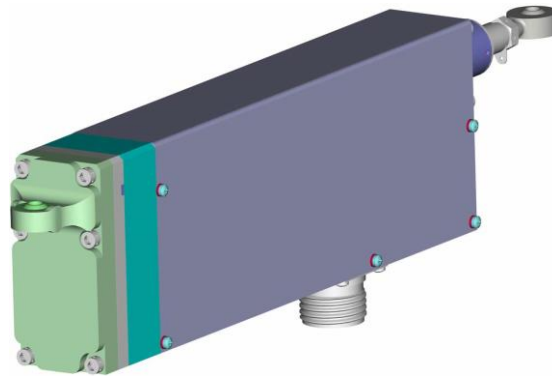
- Flight Control Systems
- Doors (Cargo Door etc.)
- Pilot Controls (Pedal Actuation)
- Engine Controls



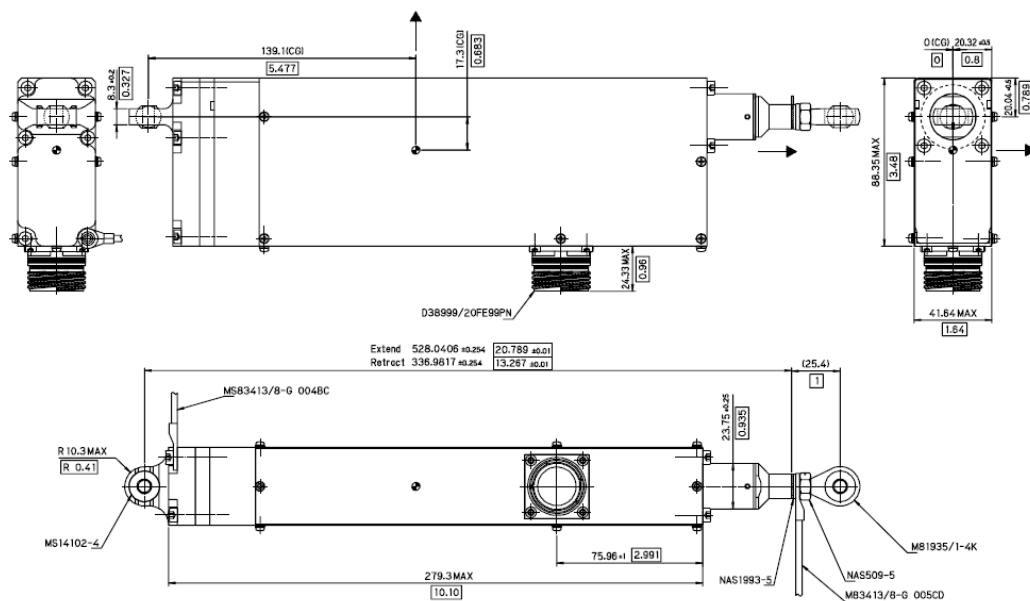
## Specifications

Type	Linear Actuation (Ball-screw)
Input Voltage	28 V (18 to 32 V)
Current	3.2 A
Stroke	195 mm (7.7 inches)
Rated Load (Operating Load)	2.2 kN (495 lbs)
Operating Speed	9.7 mm / sec (0.38 in / sec)
Motor	Brushless DC
Mass	1,600 g (3.53 lbs)

## Structure



## Outline



\*Dimensions are in mm