

Electro-Mechanical Actuator

Jack-screw Type

Description

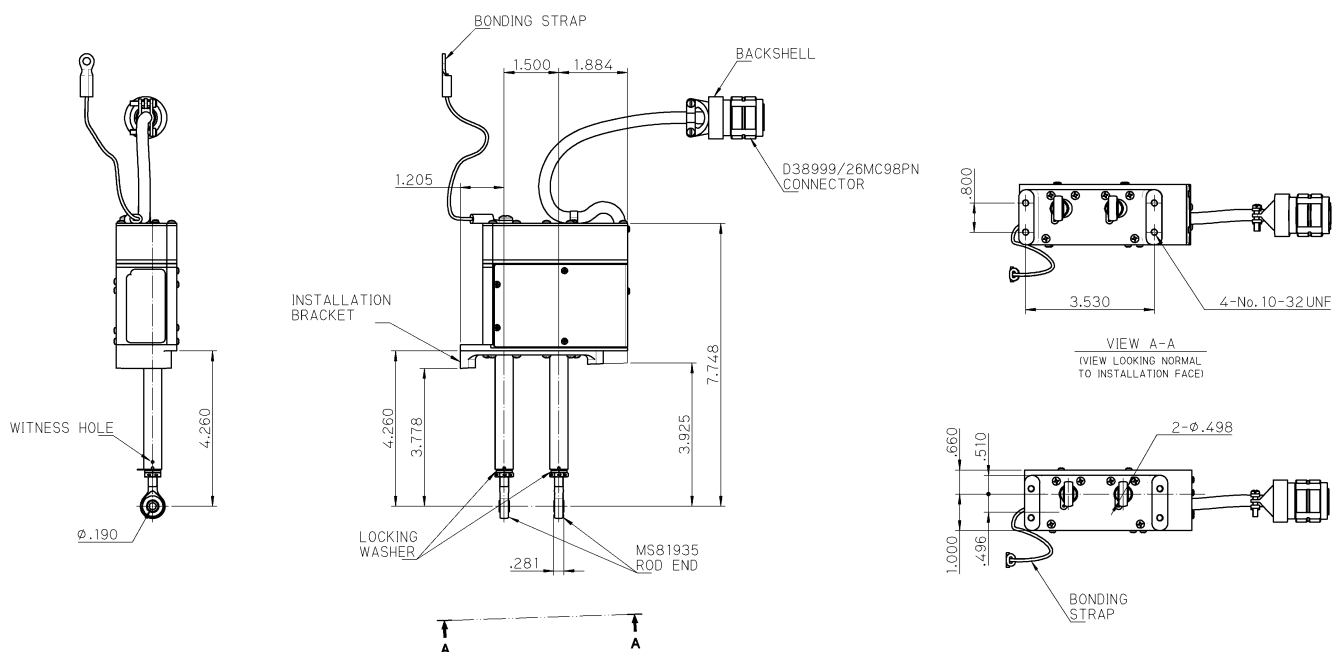
It is an electric linear actuator with Jack-screw (ACME screw) made by TAMAGAWA. Integrated electrical motor, sensor, controller and clutch are developed and produced in house. Stroke in our experience is up to 50.8 mm (2 inches), operating force is up to 1,750 N (395 lbs), and operating speed is up to 0.165 inch/sec. It is limited as irreversibility type.



Applications

- Flight Control Systems
- Surface Trims (Pitch, Rudder & Roll)
- VCS Door
- Valve Control

Outline

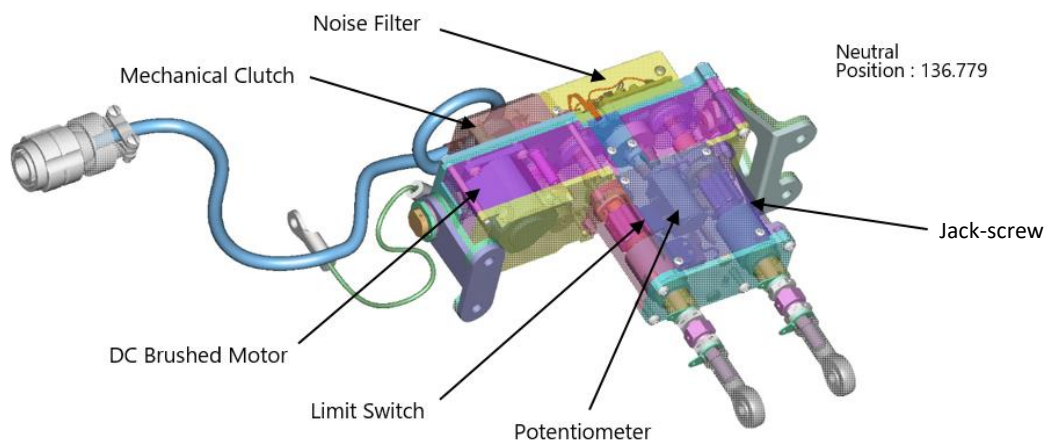


*Dimensions are in mm

Specifications

Type	Linear Actuation (Jack-screw)
Input Voltage	28 V (18 to 32 V)
Current	0.08 A
Stroke	8.3 mm (0.33 inches)
Rated Load (Operating Load)	622 N (140 lbs)
Limit Load	900 N (202 lbs)
Operating Speed	0.43 mm / sec (0.017 in / sec)
Stroke Detection	Potentiometer
Mass	2,390 g (5.27 lbs)

Structure



Block Diagram

